

# Furniture

FOR PROFESSIONAL USE

# 2023



*Xirbi*

# Xirbi

Xirbi is a generous range of furniture developed to meet the tough demands of outdoor public spaces.

Each piece in the collection is manufactured with a focus on durability and ease of use.

That our furniture is of high-quality and on trend is also extremely important to us.





## Content

---

Chairs	4-8
Armchairs	9-11
Stools	13
Table tops	14-19
Table stands	20-22
Accessories	23



# PARIS

## One of the most iconic chairs on the market.

Few people have never had the opportunity to sit on a Paris-series chair. This best-seller is the first choice of many cafés and restaurants. It's easy to see why. The Ø 28 mm aluminium frame is lightweight, which makes it easy to handle and stack, without taking too much space. The seat and back are made of textiles or rattan fibre, available in different colour combinations. Our Paris-series chair is a comfortable and durable choice.



### 1. Cross reinforcement

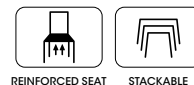
A cross-reinforced seat means that the seat is reinforced with cross-shaped wood, which provides extra support and stability. In addition, it protects against wear and tear, which ensures the chair a longer life.

### 2. Braid-reinforced seat

Braid reinforcement means that the seat is reinforced with braided wire. The wires give the chair seat greater strength and durability. Braid reinforcement also helps ensure a more comfortable sitting experience, as the wires provide lift and support for the seat.



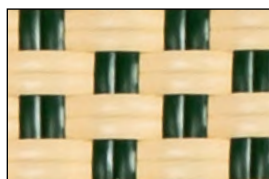




Size: W47 x D56 x H88 cm  
Seat: 46 cm  
Color: Nature | Burgundy/creme  
Art.no: 78667



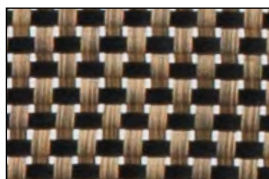
Size: W47 x D56 x H88 cm  
Seat: 46 cm  
Color: Nature | Green/creme  
Art.no: 78666



Size: W47 x D56 x H88 cm  
Seat: 46 cm  
Color: Black | Black  
Art.no: 78626



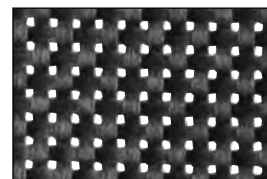
Size: W48 x D58 x H88 cm  
Seat: 46 cm  
Color: Brown | Black/brown  
Art.no: 78577



Size: W48 x D58 x H88 cm  
Seat: 46 cm  
Color: Dark gray | Khaki  
Art.no: 78593



Size: W48 x D58 x H88 cm  
Seat: 46 cm  
Color: Black | Black  
Art.no: 78578



# MENTON

Menton is inspired by our most popular chair, Paris.

With its slightly less detailed design, Menton is an affordable option, without compromising on quality or durability. The chair has a black, powder-coated, Ø 28 mm aluminium frame. The seat is reinforced texteline and available in two different colours.



REINFORCED SEAT



STACKABLE



Size: B47,5 x D54,5 x H86,5 cm

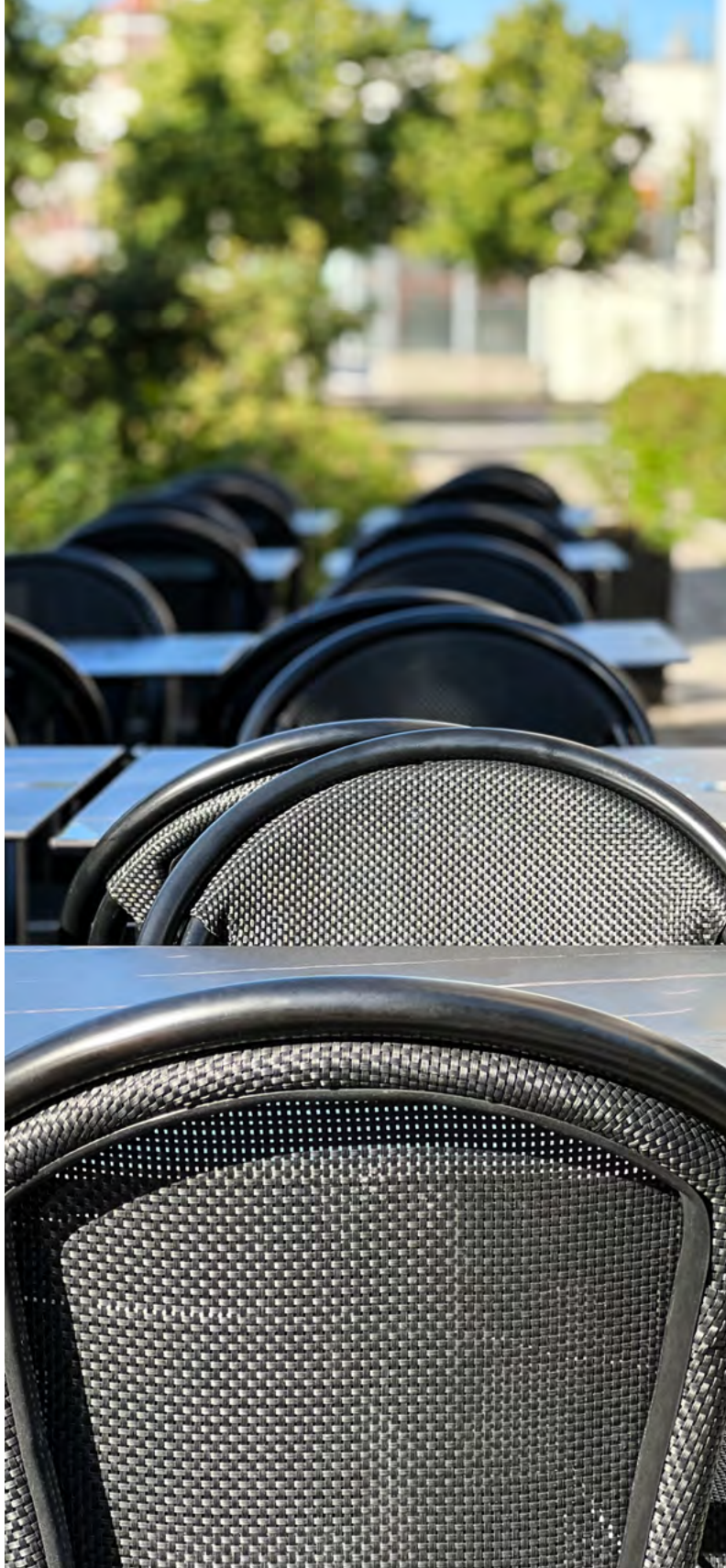
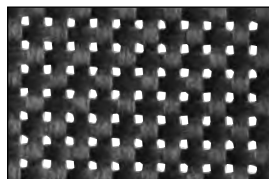
Seat: 45 cm

Color: Black | Black/white

Art.no: 78592

Color: Black | Black

Art.no: 78659



## Texteline - comfortable and durable material.

Texteline is a lightweight, durable and comfortable synthetic material that ensure a comfortable seat. The chair is easy to clean and highly resistant to stresses such as mould, dirt and colour fading due to sunlight.

Xirbi



# CALAIS

## A bright, French-inspired bistro chair.

The chair has an Ø 28 mm aluminium frame, with a bamboo look, which gives it a natural feel. The seat and back consist of a bright rattan fibre, with a warm look. Cross-reinforced and braid-reinforced seat.



REINFORCED SEAT



STACKABLE



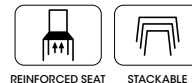
Size: W47 x D56 x H88 cm  
Seat: 46 cm  
Color: Nature | Creme  
Art.no: 78668



### Synthetic rattan – requires minimal maintenance.

Synthetic rattan has a very natural look and is an obvious choice over natural rattan, as it is far more durable and can withstand external stresses such as weather, dirt and colour fading due to sunlight.

# RENNES



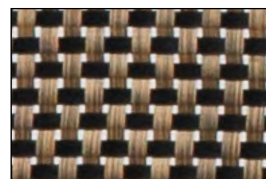
A chair suitable for both indoor and outdoor use.

Rennes is a timeless chair with clean lines and sparse décor, which means it is always in style, regardless of trends. The chair has an aluminium frame, which makes it easy to move around. The seat is both cross-reinforced and braid-reinforced, and made of materials that can withstand environmental factors such as rain, sun, wind and moisture.

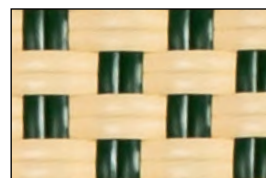
**NEW!**



Size: W43 x D59 x H88 cm  
 Seat: 45 cm  
 Color: Brown | Black/brown  
 Art.no: 78574



Size: W43 x D59 x H88 cm  
 Seat: 45 cm  
 Color: Nature | Green/creme  
 Art.no: 78680 - **NEW!**







REINFORCED SEAT



STACKABLE

# ALU-BISTRO

## A braided rattan fibre armchair.

This armchair is made of round, synthetic rattan fibres with a 4 mm steel wire core, which provides increased reinforcement and long-term durability. Ø 30 mm aluminium frame.



Size: W55 x D59 x H76 cm  
Seat: 45 cm  
Color: Aluminium | Black  
Art.no: 78153

Size: W55 x D59 x H76 cm  
Seat: 45 cm  
Color: Aluminium | Khaki  
Art.no: 78637

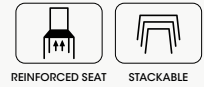








# MONACO

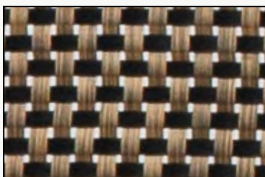


A classic armchair with support for your back and arms.

The armchair has a Ø 28 mm aluminium frame, which makes it lightweight and easy to handle. The seat and back are made of durable texteline, available in three different colour combinations.



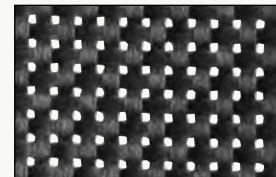
Size: W57 x D58 x H82 cm  
Seat: 46 cm  
Color: Brown | Black/brown  
Art.no: 78576



Size: W57 x D58 x H82 cm  
Seat: 46 cm  
Color: Dark gray | Khaki  
Art.no: 78657

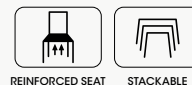


Size: W57 x D58 x H82 cm  
Seat: 46 cm  
Color: Black | Black  
Art.no: 78591



Chairs 78657, table top 78429, table stand 78239.





# LAVAL

Chairs

## Polywood – a sustainable and environmentally friendly choice.

The seat and back are made of polywood, an highly durable and weatherproof, wood-like material made of recycled plastic. Not only does the chair have a painted surface, but the material is also dyed throughout, which minimises visible wear and tear. The frame is of fully welded aluminium, with a black, powder-coated surface. Cross-reinforced seat.



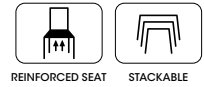
Size: W46 x D53 x H85,5 cm  
Seat: 46 cm  
Color: Black | Granite  
Art.no: 78670 - EXPIRING



Xirbi



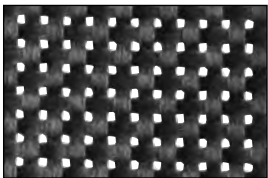
# BAR STOOL



## Maximise the number of seats for your restaurant guests.

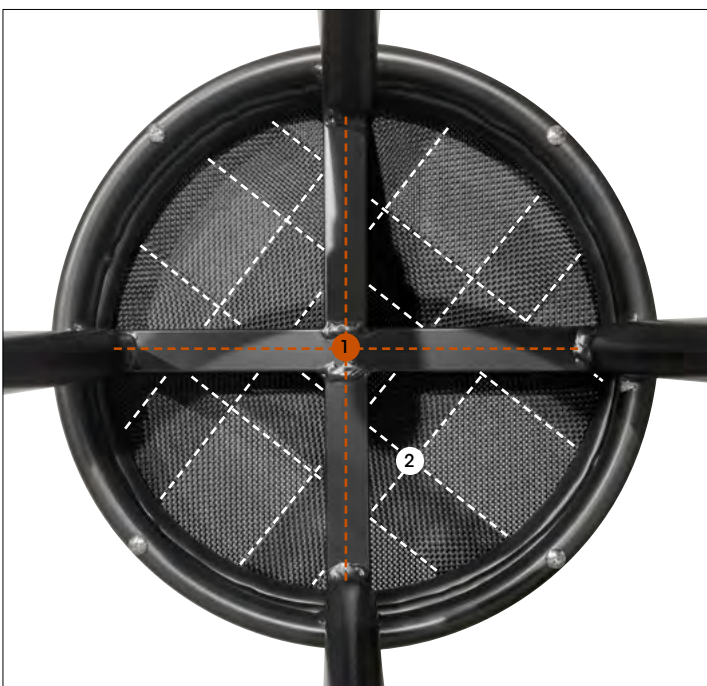
Bar stools are a simple and affordable solution to create additional seating. These can be placed along a wall, in a corner, or by the bar, both indoors and outdoors. This stool has a black-coated, Ø 28 mm aluminium frame, with a comfortable footrest. The seat is reinforced with texteline.

Size: W47 x D47 x H75 cm  
Seat: 75 cm  
Color: Black | Black  
Art.no: 78594



1. Reinforced crossbars.
2. Wicker-reinforced seat of texteline.

Bar stool 78594, table top 78650, table stand 78590.





# Werzalit® Classic

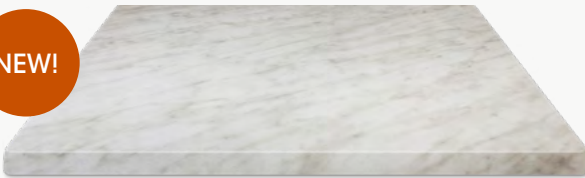
The moulded laminate has a smooth surface that is easy to clean and requires minimal maintenance. It is extremely durable and will not lose its sheen or colour over time. Choose among colours that mimic lighter shades of marble and stone.

## MARBLE

**werzalit**  
since 1923.

Shape	Thickness	Size	Art.no
□	35 mm	70x70 cm	78046
□	35 mm	110x70 cm	78055

NEW!

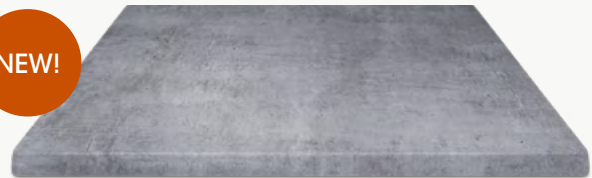


## CITY

**werzalit**  
since 1923.

Shape	Thickness	Size	Art.no
○	26 mm	Ø 60 cm	78828
		Ø 70 cm	78826
□	35 mm	60x60 cm	78827
		70x70 cm	78825
□	35 mm	110x70 cm	78100

NEW!



# Sintered stone table tops

Our stone table tops are made of natural kaolin clay that has been sintered or bonded at a temperature of 1200°C. This tough processing makes the material harder than stainless steel. Sintered stone is perfect for outdoor use. Its properties make it extremely resistant to high temperatures, abrasion and staining. Pre-drilled M6 threads.

## WHITE

Shape	Thickness	Size	Art.no
○	12 mm	Ø 60 cm	78651
		Ø 70 cm	78671



## BLACK

Shape	Thickness	Size	Art.no
○	12 mm	Ø 60 cm	78650
		Ø 70 cm	78672
□	12 mm	60x70 cm	78652 - EXPIRING





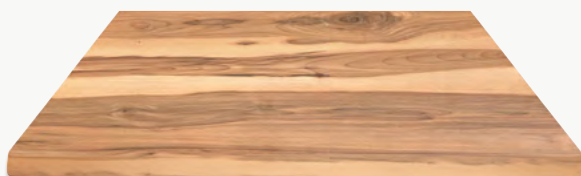
# Topalit® Classicline

The pore-free surface is easy to clean and can withstand tough treatment. The outer layer has high UV resistance and can withstand temperatures of up to 180°C.

Please note that all Topalit® table tops have been discontinued.

## ALPINE MAPLE

Shape	Thickness	Size	Art.no
□	34 mm	60x60 cm 70x70 cm	78673 78674
□	34 mm	110x70 cm	78675



## ATACAMA CHERRY

Shape	Thickness	Size	Art.no
○	26 mm	Ø 60 cm	78584



## WHITE WOOD

Shape	Thickness	Storlek	Art.no
□	34 mm	70x70 cm	78676



## TEAK

Shape	Thickness	Storlek	Art.no
○	26 mm	Ø 60 cm	78468



## CONCRETE

Shape	Thickness	Size	Art.no
□	34 mm	60x60 cm	78428



## MESSINA OAK

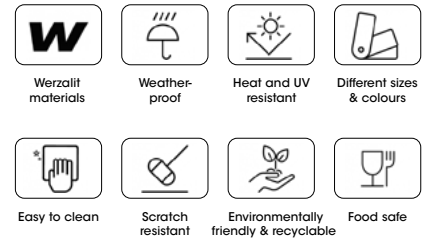
Shape	Thickness	Size	Art.no
○	26 mm	Ø 60 cm	78638





# Werzalit® table tops

Werzalit® has been manufacturing table tops for more than 60 years, with passion and creativity. Due to its thoroughness and quality work, the French production facility in Rochefort can manufacture and deliver products at any time of the year. The manufacturing and choice of materials is always done with the greatest respect for nature. Products are manufactured from 100% recycled wood. Sustainability and recycling are key to the use of resources at Werzalit®. All of its products can be recycled.



**NEW!**

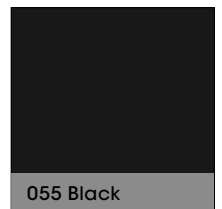
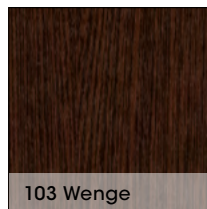
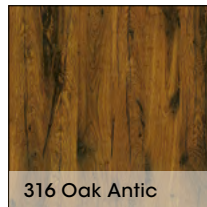
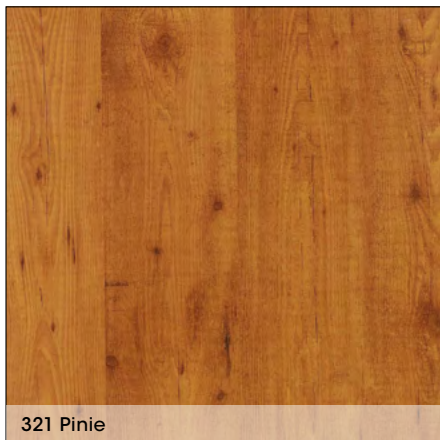
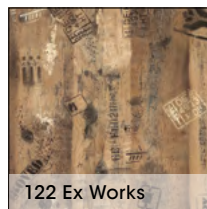
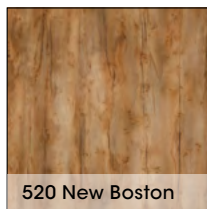
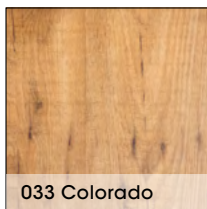
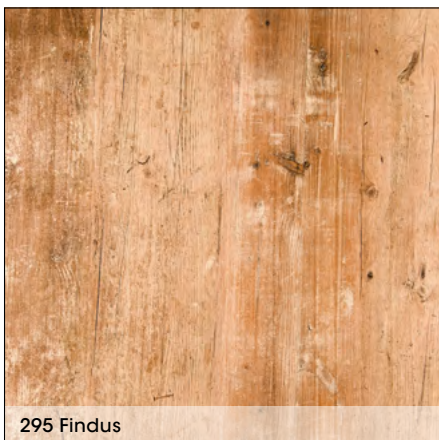
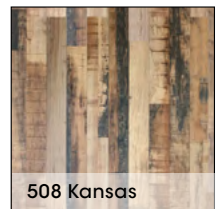
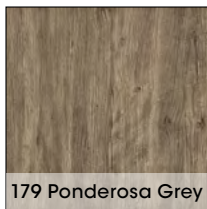
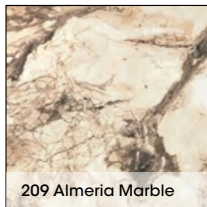
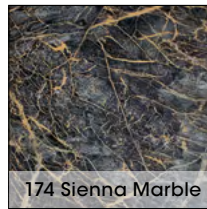
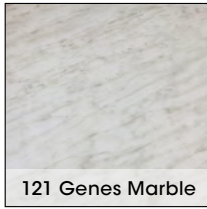
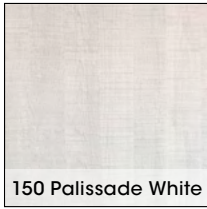
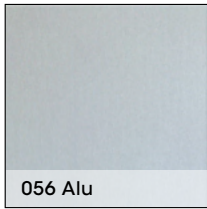
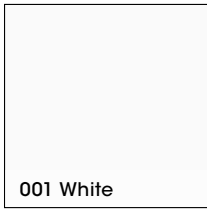
Choose from a wide range of colours, patterns and shapes to create the perfect table with your personal style.

Werzalit® offers outstanding options for creating unique table tops, and we are proud to offer selected series from their range: Classic, Bistro, and Carino.



Above are a few examples of how Werzalit table tops might look.

# Choose between 30 different colours and patterns





# CLASSIC

## A classic table top in a wide range of colours and patterns.

A series of durable, hygienic, but also aesthetically pleasing moulded table tops in laminate. Choose between the colours and patterns on page 17 that mimic stone, marble and wood, with subtle colours.

Classic table tops cannot be ordered from our website. To place an order, please contact your sales representative for more information.

Delivery time is about 3 weeks after the order has been approved.



Above are examples of how table tops from the Classic series might look.

Shape	Thickness	Size
○	26 mm	Ø 60 cm
		Ø 70 cm
□	35 mm	60x60 cm
		70x70 cm
		80x80 cm

# BISTRO

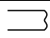
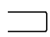
## Experience the atmosphere of a genuine French bistro.

Complement your Classic series table tops with a frame to create a warm and traditional atmosphere. Not only is the frame decorative, it also offers extra protection for the table edges. Choose between glossy or brushed frames, available in materials light chrome, copper, and brass. Table top colours and patterns can be found on page 17, while sizes and shapes are listed in the table below.

Bistro table tops cannot be ordered from our website. To place an order, please contact your sales representative for more information. Delivery time is about 5 weeks after the order has been approved.



Above are examples of how table tops from the Bistro series might look.

Shape	Thickness	Edge	Size
○	26 mm		Ø 60 cm
			Ø 70 cm
□	35 mm		55x55 cm
			60x60 cm
			70x70 cm


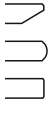

# CARINO

**werzalit**  
since 1923

## Create an exclusive space with compact laminate.

Carino offers thin, but strong and elegant table tops, suitable for both indoor and outdoor use. The series has a fantastic range of shapes, which can be found on page 17, along with the different colours and patterns. This offers the unique opportunity to create a personal atmosphere. Sizes and shapes are listed in the table below.

Carino table tops cannot be ordered from our website. To place an order, please contact your sales representative for more information. Delivery time is about 5 weeks after the order has been approved.

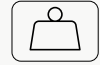
Shape	Thickness	Edge	Size
○	10-12 mm		Ø 60 cm
			Ø 70 cm
			Ø 80 cm
			Ø 90 cm
□	10-12 mm		50x50 cm
			60x60 cm
			70x70 cm
			80x80 cm
			90x90 cm
▭	10-12 mm		70x60 cm
			100x60 cm
			110x70 cm
			120x80 cm
			140x70 cm
			160x80 cm
			160x90 cm



## Care and cleaning of all Werzalit table tops

- Use only water with a small amount of detergent to clean the table tops. Alcohol-based cleaning products also work well.
- Avoid abrasives and scouring agents. These will cause the table tops to lose their sheen.
- To prevent water from collecting on the inside through the edges, e.g. from rain, store the tables either upright or upside down.
- Use bright decorations if your tables are permanently exposed to the sun.





EXTRA WEIGHT



STACKABLE

# BARCELONA

## Minimise storage space.

Our folding stands make it much easier to handle and store the tables. The table top can easily be folded down along the side of the stand, creating entirely new storage opportunities.

Black powder coated aluminium.

Max weight: 10 kg  
Extra weight: 3 kg  
Height: 72 cm ±  
Art.no: 78624



Table stands



# SEVILLA



Lasting elegance for both indoor and outdoor use.

One of our favorites is the table stand Sevilla. It is a durable and stylish stand made of durable aluminum. The slim shape of the base means that Sevilla fits just as well indoors as outdoors.

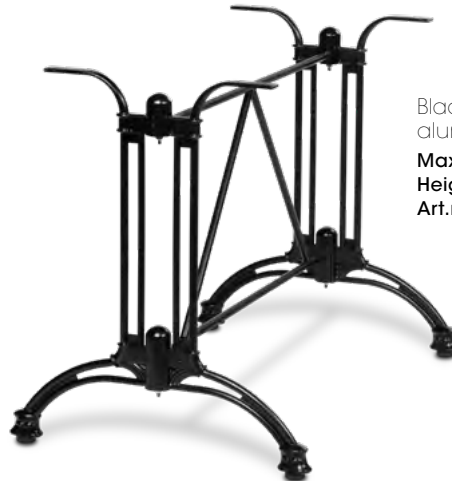


Aluminium.  
**Max weight:** 10 kg  
**Extra weight:** 2 kg  
**Height:** 72 cm ±  
**Art.no:** 78660

# PALMA

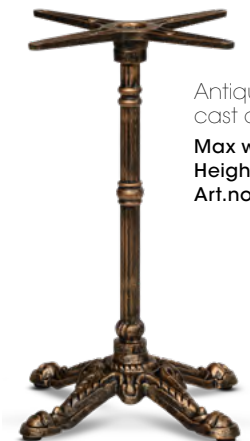


Black lacquered cast aluminium.  
**Max weight:** 10 kg  
**Height:** 72 cm ±  
**Art.no:** 78181



Black lacquered cast aluminium.  
**Max weight:** 20 kg  
**Height:** 72 cm ±  
**Art.no:** 78182

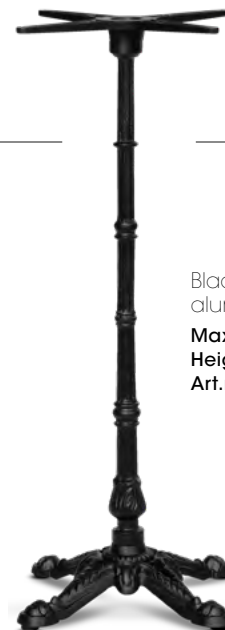
# MADRID



Antique brass lacquered cast aluminium.  
**Max weight:** 10 kg  
**Height:** 72 cm ±  
**Art.no:** 78589



Black lacquered cast aluminium.  
**Max weight:** 10 kg  
**Height:** 72 cm ±  
**Art.no:** 78471

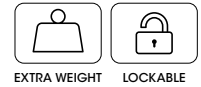


Black lacquered cast aluminium.  
**Max weight:** 10 kg  
**Height:** 110 cm ±  
**Art.no:** 78590

Xirbi



# MARBELLA



Black, powder-coated aluminium.  
**Max weight:** 10 kg  
**Extra weight:** 3 kg  
**Height:** 72 cm ±  
**Art.no:** 78239



Black, powder-coated aluminium.  
**Max weight:** 20 kg  
**Extra weight:** 4 kg  
**Height:** 72 cm ±  
**Art.no:** 78240



Gray, powder-coated aluminium.  
**Max weight:** 10 kg  
**Extra weight:** 3 kg  
**Height:** 72 cm ±  
**Art.no:** 78569 - EXPIRING



Gray, powder-coated aluminium.  
**Max weight:** 20 kg  
**Inkl:** 4 kg extra tyngd  
**Height:** 72 cm ±  
**Art.no:** 78570 - EXPIRING

# VALENCIA



Aluminium.  
**Max weight:** 10 kg  
**Height:** 72 cm ±  
**Art.no:** 78186



Aluminium.  
**Max weight:** 20 kg  
**Height:** 72 cm ±  
**Art.no:** 78187

# BARRIER POLE

Set of 2 stainless steel poles + 1 braided black rope.

Height: 97 cm  
Width: 32 cm  
Art.no: 78597



# BRAIDED ROPE

Braided black rope to barrier pole.

Length: 150 cm  
Width: 3,20 cm  
Art.no: 78598



Xirbi

# FLAT<sup>®</sup> EQUALIZERS

Stabilise and level the table.

Adjustable feet that fit all table stands from Xirbi. With a simple push on the table top, the table is level and stabilised up to 6 mm. The feet have M8 threading and fit all stands with the same threading.

4 pcs.  
Art.no: 78424





# Xirbi

Xirbi is a generous range of furniture developed to meet the tough demands of outdoor public spaces.

Each piece in the collection is manufactured with a focus on durability and ease of use.

That our furniture is of high-quality and on trend is also extremely important to us.

## MERXTEAM

MerxTeam AB  
Galvaniseringsgatan 5  
41707 GÖTEBORG  
Tel: +46 31 50 67 00  
info@merxteam.com

[merxteam.com](http://merxteam.com)

